

Kimbell Center News

from Jonathan Dickinson State Park

MAY 2020

WELCOME BACK!



Photo by Bruce Bain

Jonathan Dickinson State Park is **now open** for limited day use activities daily from 8 am - sunset.

We know you have been looking forward to returning to JDSP. Use the information below to help you plan your next visit.

Guidelines for all activities:

- Maintain distances of at least six feet apart
- Limit group size to ten or fewer people

Additional information:

- Exact change is required for cash payments

What's open:

- Hiking and biking trails
- Canoe/kayak launch
- Boat ramp

What's closed:

- Boat tours
- Equestrian tours
- Equipment rentals
- Concession restaurant
- River Store
- Visitor Center

Restroom availability:

- Camp Murphy MTB trailhead facilities are open
- Bathhouses at Cypress Creek and Loxahatchee are open
- All other restrooms remain closed

The most up-to-date

(no change will be provided)

- Credit card payments are being accepted
- A no-contact day pass will soon be available for online purchase
- After hours access is unavailable at this time
- Park is operating at 50% carrying capacity and will close when this attendance is reached

information on facility status can be found at the **Florida State Parks website** or by contacting the Ranger Station at 772-546-2771.

Annual Entrance Pass

Expiration Extension!

Use Your Annual Entrance Pass for 2 Extra Months This Year!



Annual Pass Extension

Due to recent statewide park closures from COVID-19, Florida State Parks will honor all current Annual Entrance Passes for 2 months past the marked expiration date. Simply present your pass card, like normal, at the time of admission.

Park Improvements

As part of the best state park system in the country, Jonathan Dickinson State Park takes the opportunity to provide the best experiences for visitors seriously. To that end, no time was wasted during the temporary park closure. Next time you're at the park you will notice evidence of the hard work that took place in resource management and facility improvement.



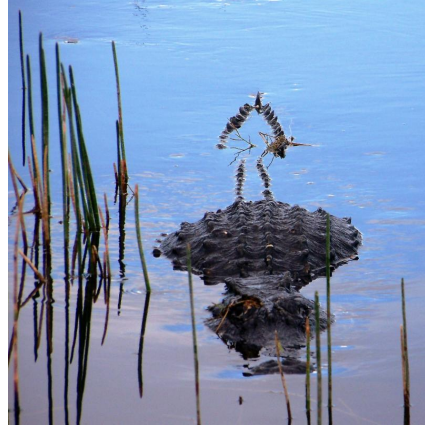
The cabin loop is just one example of these improvements. All cabins had interior painting completed, cabins six and seven had brand new decks installed, and repairs and replacements were done on an as-needed basis in all cabins. In keeping with our commitment to conservation, each cabin was also outfitted with new dual-flush toilets as a water saving measure and LED lighting to reduce energy demands.

These newly updated cabins look forward to their next guests, when cabin lodging resumes.

Alligator Mating Season Has Arrived

Alligator mating season is here! Mating typically lasts through the end of May. Throughout June, female alligators will build nests and lay eggs, incubating them for approximately 65 days.

During mating season, you may see increased alligator activity. As always, do not approach wildlife. Appreciate these incredible creatures from a distance.



**Jonathan Dickinson State Park
Kimbell Education and Visitor Center
561-745-5551**

Connect with us

